

**Project: Patriot Drive, Milton Keynes**

**Client: Schaltbau**

**Sector: Transport**

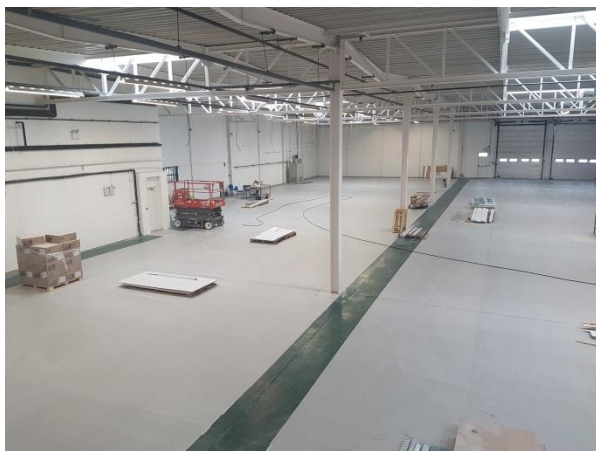
**Duration: 2 Months**



**Schaltbau is a electromechanical components and systems producer for transport and industrial applications**

**The new office and warehouse unit based in Rooksley, Milton Keynes was designed with a high specification structured cabling system employing Cat7a throughout and Om4 fibre cabling links between server and main data cabling cabinets**

**Due to the high data cabling installation and termination requirements of Cat7a cabling, specific care was taken in the design, installation and positioning of the data cabling outlets**



**The Cat7a data cabling would be employed for the Telephone Systems, IT Systems, WIFI and DECT Phone base stations**

**As the property was part offices and part warehouse space, data cabling was required to be installed from electric scissor lifts at 8m working heights. This would be required for running the data cabling to the WIFI and DECT access points**





**The Office space was only aesthetically refurbished so part of the data cabling design for NM Cabling was how to incorporate the containment for running and terminating the Cat7a structured cabling**

**A range of dado and maxi trunking was employed for this purpose**

**The installation of bespoke containment and shrewd design allowed the Cat7 cabling to maintain its bend radius and allow for correct termination at the user end**

**One of the challenges with cat7 cabling installations is the correct containment, pre designed routes and allowances which needed to be overcome on this project**



**Upon completion of the data cabling installation and termination the testing was undertaken with a specific Cat7 cabling tester. The last unique element of this project and any Cat7 cabling project**